

“The How to Guide...”

Connecting Bluetooth Devices Together

Version 1.1b

Outline

- About Bluetooth (a.k.a. BT)
- Connecting a Bluetooth-enabled Device to:
 - A [WinXP-based](#) Desktop / Laptop / Netbook's (or [DLNs](#)) Bluetooth
 - A [Windows-based](#) Handheld's Bluetooth
 - A [Palm-based](#) Handheld's Bluetooth


About Bluetooth (a.k.a. BT)

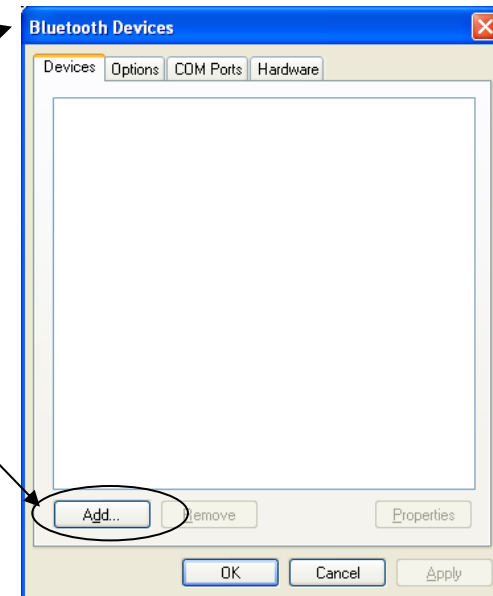
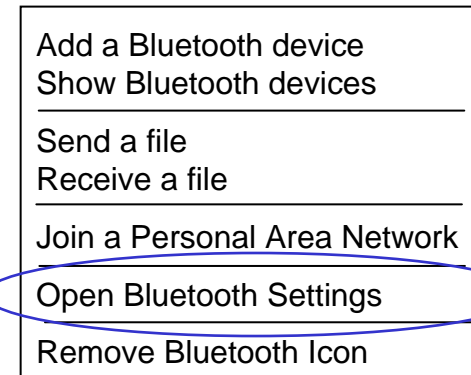
- **Bluetooth** was created to simplify the connectivity process between two devices. It does this through profiles, and there are a number of different profiles depending upon the application. For connecting a Handheld to a BT device with GPS, the SPP (**Serial Port Profile**) is used, for instance.
- Bluetooth is not a perfect specification in real application – between a Handset and another BT device, for example – due to the many different BT silicon vendors, many system companies that implement BT, and many consumer products that use BT.
 - An immediate connectivity doesn't always occur, and sometimes turning off both devices and turning them back on is required
- There are a series of revisions (v1.0, v1.1, v1.2, v2.0, v2.1) to the BT specification, and these revisions have improved the performance of BT regarding its “ease to connect” to another BT device.

Setting up and Connecting a BT-enabled Device to a *WinXP-based DLNs*

Connect BT-enabled (GPS) Device to BT Adapter

- WinXP – *Initial Set up***

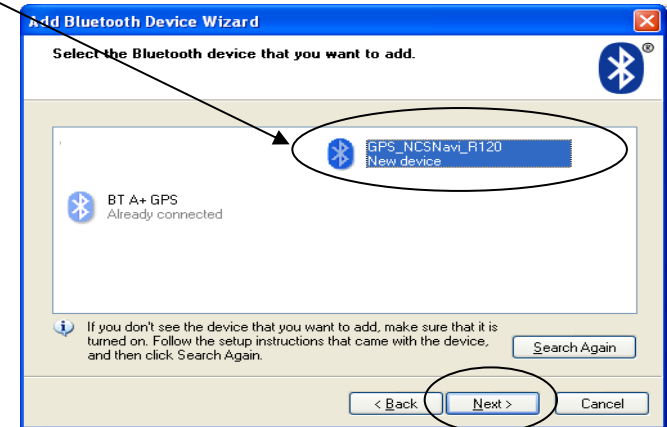
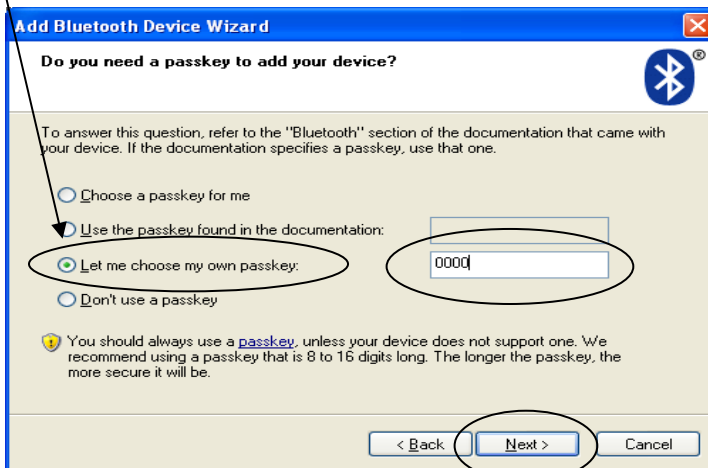
- Turn on BT-enabled device (called **886 GPS, Headset** or other preferred BT device)
 - Plug in BT-USB adapter to USB port on DLN if your DLN doesn't have an internal BT device
- At bottom right of screen, click on **Bluetooth** icon → 
 - Or **double click** on Bluetooth icon
- Select **Open Bluetooth Settings**
- Bluetooth Devices** screen will open up
- DLN will assign the Outgoing COM port and the Incoming COM port
 - Click on **Add** to find the BT-enabled device to discover and assign the BT-GPS device



NOTE: Each Desktop / Laptop / Netbook may have a slightly different screen to follow

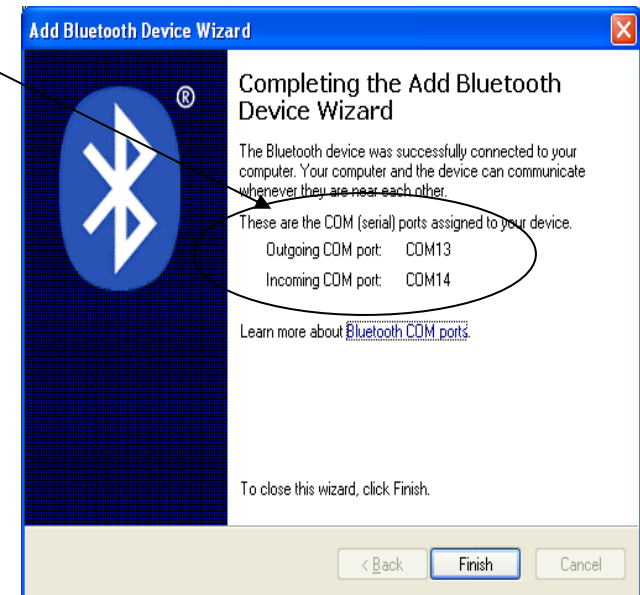
Connect BT-enabled (GPS) Device to BT Adapter

- **WinXP – Initial Set up (cont)**
 - Check the box **My device is set up and ready to be found**
 - Click on **Next**
 - Select the device
 - Click **Next**
 - Select to enter the code
 - Enter four zeros (**0000**)
 - Select **Next**



Connect BT-enabled (GPS) Device to BT Adapter

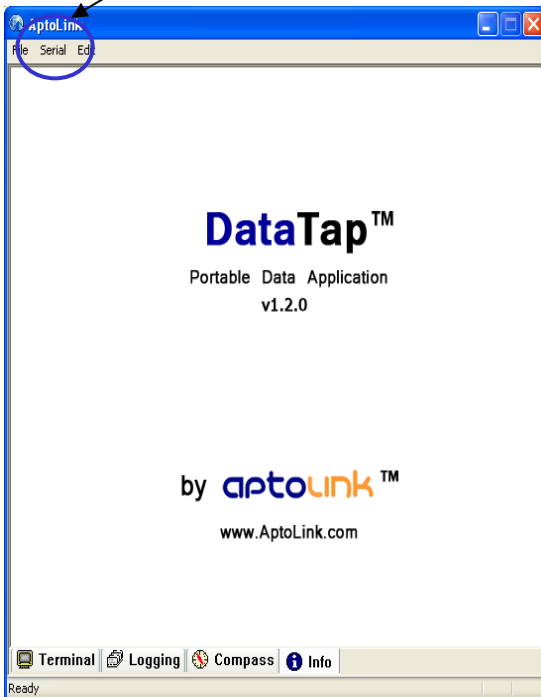
- Click on **Finish** to complete the connection
 - The **Incoming COM Port** is assigned and receives the GPS data into the computer through the assigned COM port
 - The **Outgoing COM Port** is assigned and points the GPS data to the COM port that the **DataTap** software uses to display the GPS data
- If DLN's BT isn't connected to an external BT (GPS) device within a few minutes, the BT icon may disappear from the bottom right of the computer screen
 - To enable this icon, unplug BT device (if you have a BT adapter) and re-plug into DLN
 - Or, go to **Start / Control Panel / Network Connections ...** and double click on it
 - Double click on **Bluetooth Network Connections**
 - Click on open **Bluetooth Devices** in Control Panel
 - Click on **COM Ports** tab
 - The DLN will scan for available ports and assign the Outgoing and Incoming ports



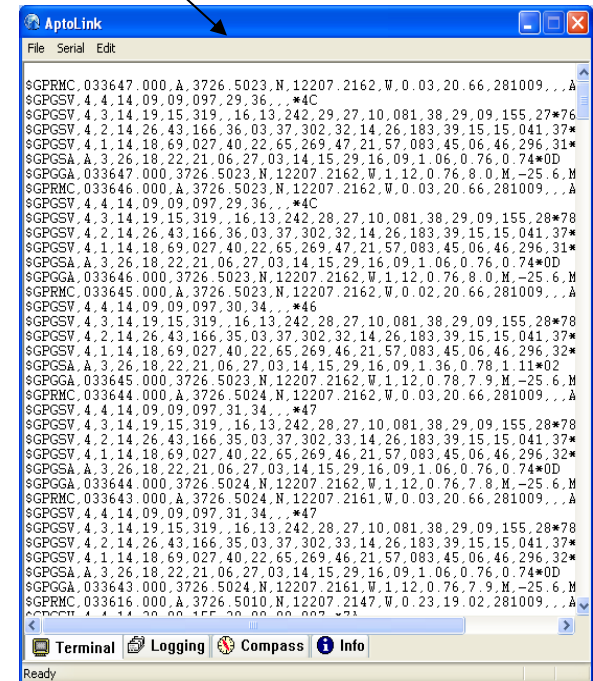
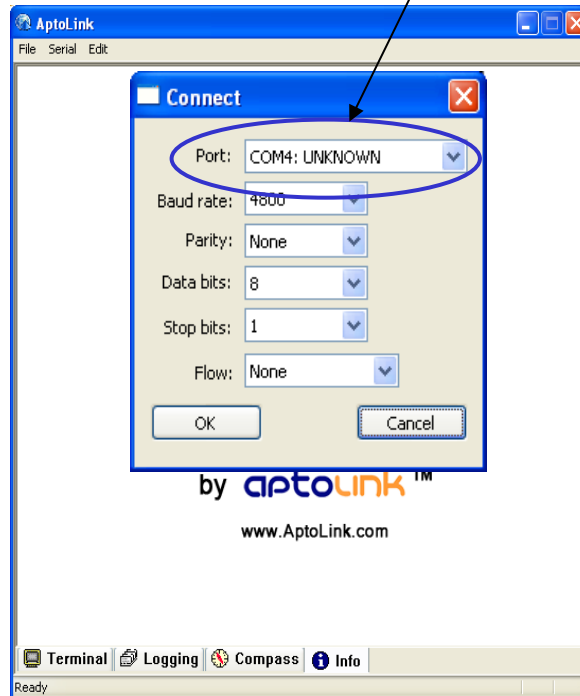
DataTap™ Portable Software Connection

For
WinXP
Products

- Click on **Serial** and select the Outgoing **COM** port number, click **OK**
 - GPS (NMEA) data will start flowing into the **Terminal** screen



Home screen





Terminal screen

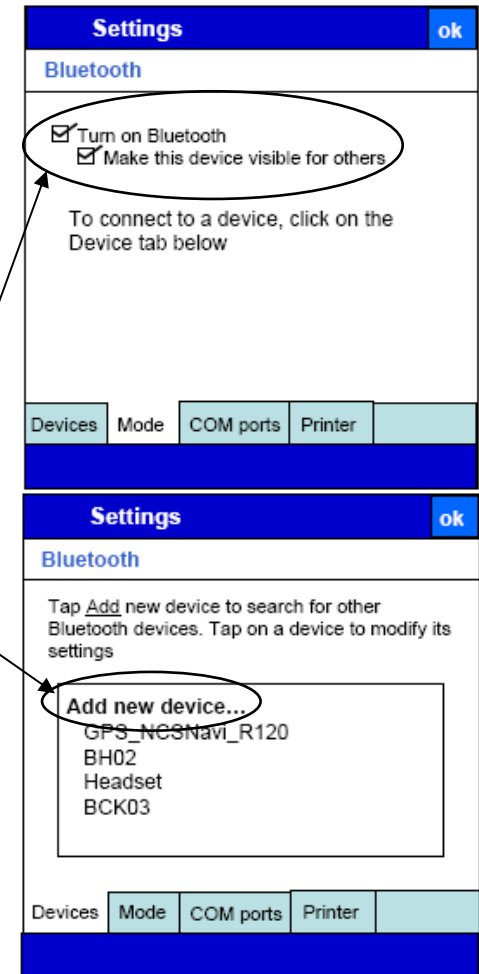
For
WinMobile
Devices

Setting up and Connecting a BT-enabled Device to a *Windows-based Handheld*

For WinMobile Devices

Connect BT-enabled Device to Handheld's BT

- **Windows-based Handheld – Initial Set up**
 1. Turn on BT-enabled device (called 886 GPS, Headset or other preferred BT device)
 2. Unlock screen (if locked), then at top left of screen, tap on “Start” (or at top right tap on Bluetooth icon → )
 3. Select Settings, then Connections tab at bottom of screen, then tap on Bluetooth icon → 
 1. Or, tap on Bluetooth icon at top right of Windows main screen as previously mentioned in (2 above)
 4. Select Mode tab, and check both boxes for handheld's Bluetooth device (is turned on) and is visible }
 5. Go to Devices tab, select Add new device... (Handheld will start searching for BT devices nearby) }



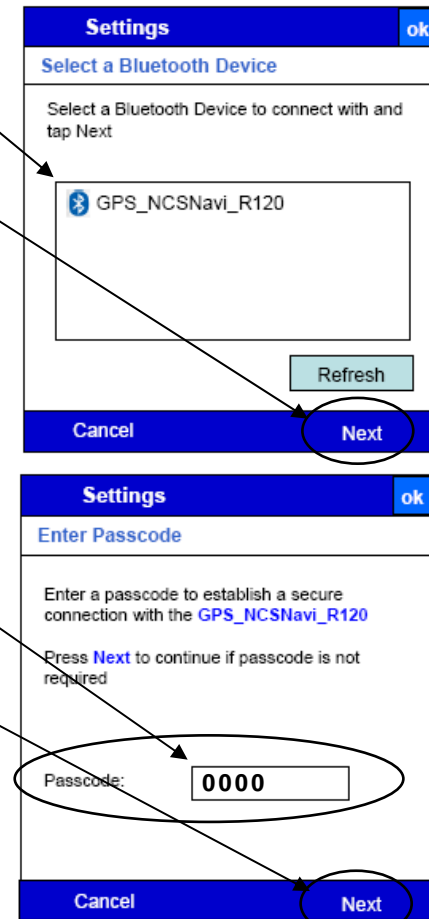
NOTE: Each Handheld may have a slightly different screen to follow.

For WinMobile Devices

Connect BT-enabled Device to Handheld's BT

- Windows-based Handheld – *Initial Set up, cont.***

- Select the BT-enabled device (called **886 GPS, Headset** or other preferred BT device), select **Next** at bottom of screen
 - NOTE:** If BT-enabled device is not initially found, tap **Refresh** button (*up to several times*) at bottom of screen until device is recognized by BT in the Handheld.
 - If still not found, double-check that the BT-enabled device and Handheld's BT are both *turned on*, then tap on **Refresh** button again
- Enter passcode: **0000** (four zeros), then **Next**, then **Done**
 - Four zeros is the default standard for BT devices



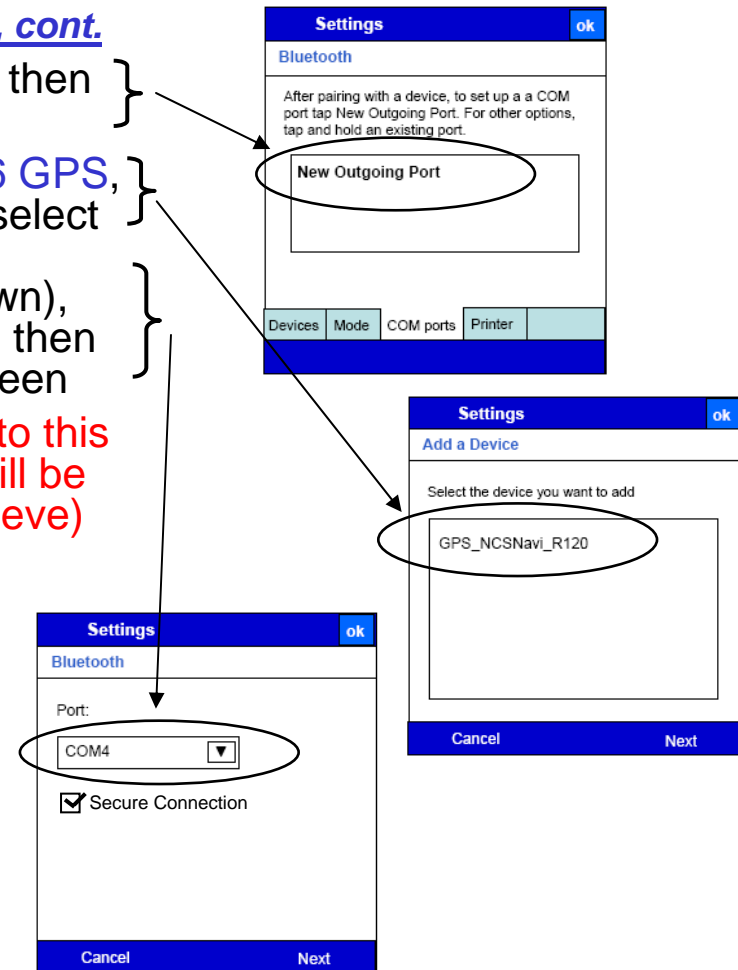
NOTE: Each Handheld may have a slightly different screen to follow.

For WinMobile Devices

Connect BT-enabled Device to Handheld's BT

- Windows-based Handheld – *Initial Set up, cont.***


- In the Bluetooth screen, go to **COM ports** tab, then tap on **New Outgoing Port**
- Select the BT-enabled device shown, e.g. **886 GPS**, select **Next** at the bottom of the screen, then select an available COM port, e.g. **COM4, COM7 or COM8**. Check **Secure Connection** box (if shown), then select **Finish** at the bottom of the screen, then tap on **OK** at top right of screen to exit the screen
 - The Handheld's BT sends the GPS data to this selected COM port. And this COM port will be used by the software to look for (and retrieve) the GPS data



NOTE: Each Handheld may have a slightly different screen to follow.

Reconnect BT-enabled Device to Handheld's BT

- **Windows-based Handheld – Reconnecting**

1. Turn on the BT-enabled device
2. Unlock screen (if locked)...
 1. Tap on **Bluetooth** icon →  at top right of screen (a direct link to get to the BT connection screen), **OR...**
 2. Tap on **Start**, then select **Settings**, then **Connections** tab at bottom of screen, then tap on **Bluetooth** icon
3. Select **Mode** tab, and check both boxes for handheld's Bluetooth device (is turned on) and is visible
4. Go to **Devices** tab, then select the BT-enabled device (called **886 GPS**, **Headset** or other preferred BT device)
5. Tap on **Refresh** button at bottom of screen until BT-enabled is recognized by Handheld's BT. If not found, re-tap **Refresh** or recheck that the BT-enabled device and Handheld's BT are both *turned on*
6. Select, or check the box called **Serial Port** (if displayed), then select **Save**
7. Tap on **ok** at top right of the screen to exit screen
8. Open the software and connect it to the GPS data to the selected COM port

NOTE: Each Handheld may have a slightly different screen to follow.

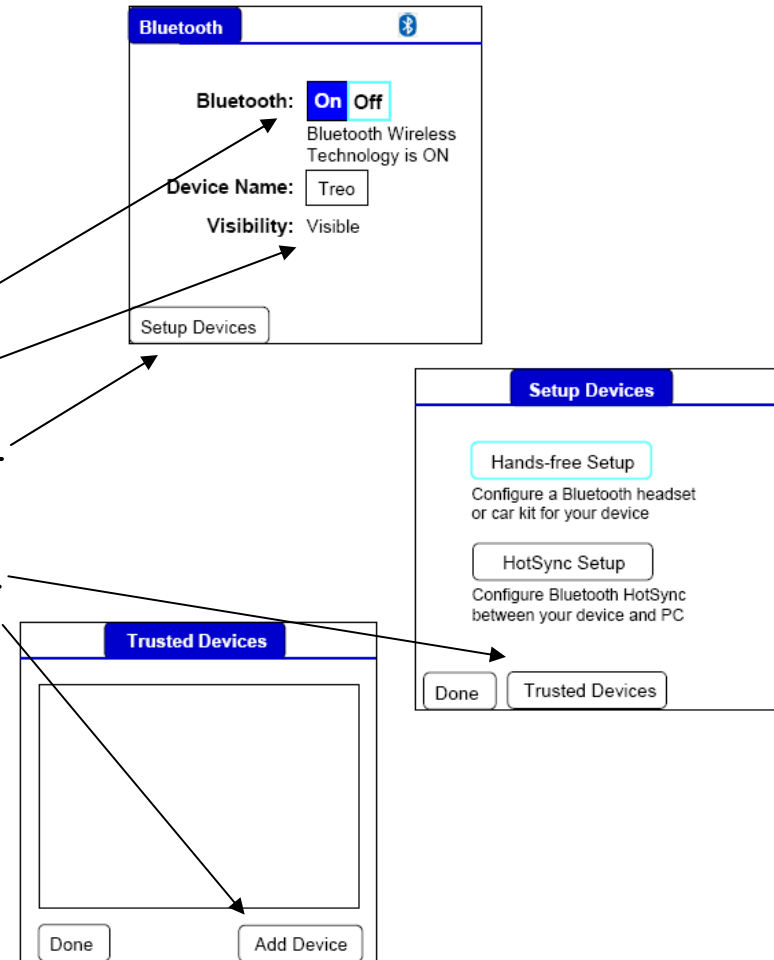
Setting up and Connecting BT-enabled Device to a *Palm-based Handheld*

For Palm Devices

Connect BT-enabled Device to Handheld's BT

- Palm-based Handheld – Initial Set up**

1. Turn on BT-GPS device (called 886 GPS, Headset or other preferred BT device)
2. In the “All” screen, tap on the Bluetooth icon
3. Turn On the Handheld’s Bluetooth
4. Select “Visible” under Visibility
5. Tap on Setup Devices at the bottom of the screen
6. Selected Trusted Devices, then select Add Device at the bottom of the screen



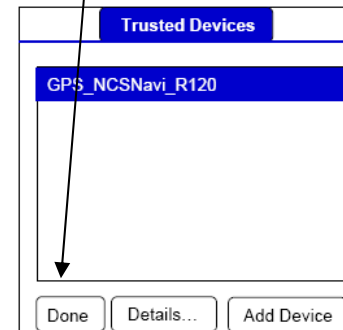
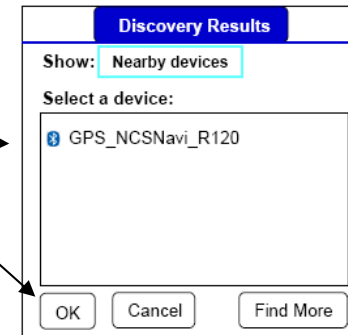
NOTE: Each Handheld may have a slightly different screen to follow.

For Palm Devices

Connect BT-enabled Device to Handheld's BT

- Palm-based Handheld – Initial Set up, cont**

- Select BT-GPS device (called **886 GPS, Headset** or other preferred BT device), then tap on **OK** at bottom of screen
 - Handheld will scan for BT-GPS
 - If Handheld doesn't find the BT-GPS device, then tap on **Find More**. It will look for "more" devices not previously scanned
- Enter passcode **0000** (four zeros), select **OK**, then **Done** at bottom of screen
 - Four zeros is default standard for BT devices
- Click on **Home** button on the Palm Handheld to return to the "All" screen



NOTE: Each Handheld may have a slightly different screen to follow.

Connect BT-GPS Device to Handheld's BT

For
Palm
Devices

- **Palm-based Handheld – *Reconnecting***
 1. Turn on BT-GPS device (called **886 GPS, Headset** or other preferred BT device)
 2. In the “All” screen, tap on the **AptoLink** icon
 3. Tap on **AptoLink** at top left of screen, then **Comm**, then **Open**
 1. Make sure the screen is set up according to receive the GPS data at 4800 baud
 4. Tap **OK**
 1. The Handheld's BT will start searching for the BT-enabled device
 5. Select the BT-GPS device, (called **886 GPS, Headset** or other preferred BT device), then tap **OK**
 1. The Handheld's BT is now connected to the BT-GPS device and GPS data is streaming into the Handheld

NOTE: Each Handheld may have a slightly different screen to follow.

For Sales or Technical Inquiries
Contact: Sales@AptoLink.com